



DEWEI CARBIDE

工程钻具用
硬质合金齿

Carbide Inserts

For Foundation Drilling Tools and Mining tools



浙江德威硬质合金制造有限公司
ZHEJIANG DEWEI CEMENTED CARBIDE MANUFACTURING CO.,LTD

以真诚连结客户，以创新架构未来

Contacting customers with sincerity, and creating the future by innovation

浙江德威，坐落于“中华全国建工基地”之称的乐清市芙蓉镇，依山傍海，风景秀丽，距离甬台高速雁荡山出口仅十公里，离温州机场 80 公里，货物到达宁波港仅两个多小时，交通便利。

本公司设计、开发、制造的硬质合金及其成品工具以优良的品质、合理的价格和优质的售后服务深得国内外客户的赞赏。公司已按照 ISO9001 质量保证模式建立了质量体系。其硬质合金制品以国际上先进的低压烧结技术、成熟的热处理工艺保障，能够为客户提供满意的优质产品。

德威公司秉承“以真诚连结客户，以创新架构未来”的企业宗旨，把人才战略放在首位，加强管理，不断提升产业层次，竭诚欢迎海内外新老客户惠顾。

Zhejiang Dewei is located in “China national hammer drill tool base” Furong Industrial Park, Yueqing city, near mountain and sea with beautiful scenery. There have convenient transport facilities, only 10KM away from Yandang exit Yong-Tai-Wen expressway, 80KM from Wenzhou Airport, and about 2 hours for delivering goods to Ningbo seaport.

By virtue of its high quality, reasonable price, and perfect aftersale service, the tungsten carbide products and finished tools designed, developed, and produced by the company have got high appreciation from clients home and abroad. The company has established a quality assurance system according to the ISO9001, and ensured by the internationally advanced HIP sintering technic and Heat Treatment technic, its tungsten carbide products are of high quality to meet its clients' requirements.

The company, by virtue of its aim “Contacting customers with sincerity, and creating the future by innovation”, is now focusing on enhancing management and industrial level. Setting an enterprise talents strategy has been given high throughout the management. We sincerely welcome the patronage of domestic and foreign customers.

Carbide Grades

牌号 Grade	晶粒度 Grain Size	粘结相 Binder (%)	硬度 Hardness (HRA)	抗弯强度 TRS (Mpa)	密度 Density (g/cm)	牌号说明 Grade Description	应用领域 Application		
							凿岩钎具 Rock Drilling	截齿 Conical Bits	石油开采 Oil Exploitation
DK05	中 medium	6	90.5	2800	14.9-15.0	具有良好的耐磨性，适用于各种规格的冲击钻、潜孔钻及三牙轮钻头。 Can be used for making compacts of various percussion, DTH bits and tricone bits for drilling medium hard formation.	●		
PDK10.8	超粗 ultra coarse	6	89.0	2100	14.90-15.05	具有良好的韧性和抗疲劳性能，适用于采矿、隧道等截齿及挖路齿。 Can be used for bits of mining, tunnel and road planning bits. It has excellent toughness and thermal fatigue property.	●	○	
PDK20.1	中 medium	8	89.5	2800	14.65-14.80	具有良好的耐磨性，适用于各种规格的冲击钻、潜孔钻及三牙轮钻头。 Can be used for making compacts of various percussion, DTH bits and tricone bits for drilling medium hard formation.	●		
DK30.4	粗 coarse	9	87.5	2800	14.55-14.70	具有良好的韧性和抗疲劳性能，适用于采矿类截齿、三牙轮钻头用齿。 Can be used for bits of mining and tunnelling. It has excellent toughness and thermal fatigue property.	●		○
DK20	粗 coarse	10	87.5	2800	14.40-14.60	具有良好的韧性和抗疲劳性能，适用于采矿类截齿、三牙轮钻头用齿。 Can be used for bits of mining and tunnelling. It has excellent toughness and thermal fatigue property.	●		○
PDK35.5	超粗 ultra coarse	10	86.6	2200	14.45-14.60	具有良好的韧性和抗疲劳性能，适用于采矿、隧道类截齿和盾构刀头。 Can be used for bits and shield cutter of mining and tunnelling. It has excellent toughness and thermal fatigue property.	●	○	
DK40.2	粗 coarse	11	86.8	2800	14.35-14.50	具有良好的韧性和抗疲劳性能，适用于采矿类截齿和盾构刀头。 Can be used for bits and shield cutter of mining and tunnelling. It has excellent toughness and thermal fatigue property.	●	○	
DK42.2	粗 coarse	13	86.5	2800	14.15-14.30	具有良好的韧性和抗疲劳性能，适用于采矿、隧道类截齿和盾构刀头。 Can be used for bits and shield cutter of mining and tunnelling. It has excellent toughness and thermal fatigue property.	●		
DK42.3	超粗 ultra coarse	13	86.0	2200	14.15-14.30	具有良好的韧性和抗疲劳性能，适用于采矿、隧道类截齿和盾构刀头。 Can be used for bits and shield cutter of mining and tunnelling. It has excellent toughness and thermal fatigue property.	●	○	
DK45.2	粗 coarse	15	85.6	2800	13.90-14.20	具有良好的韧性和抗疲劳性能，适用于采矿、隧道类截齿和盾构刀头。 Can be used for bits and shield cutter of mining and tunnelling. It has excellent toughness and thermal fatigue property.	●	○	

● 推荐牌号 Recommended Grade ○ 次选牌号: Second Selection Grade



工程钻具用硬质合金齿

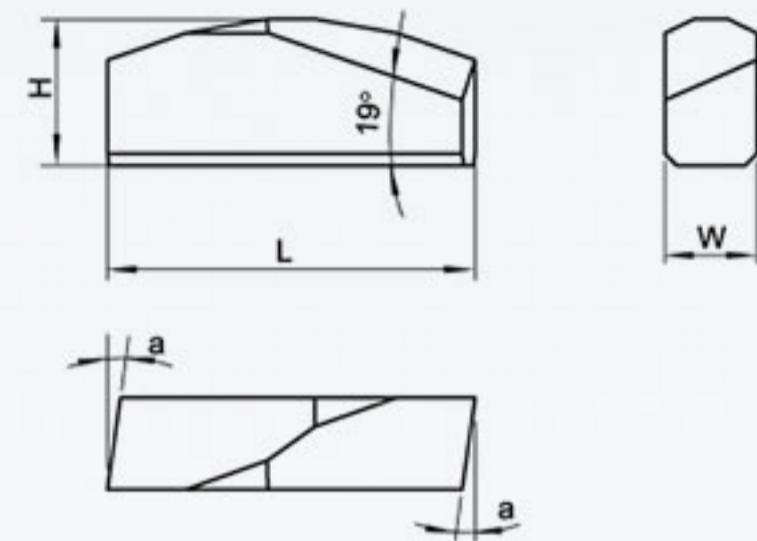
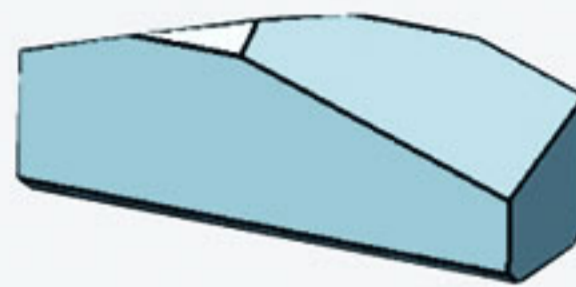
Carbide Inserts for Foundation Drilling Tools and Mining Tools

锚杆钻片 Roof Bit Inserts

规格 Type	型号 Dimension(mm)			
	L	H	T	a
MZPA9009	25.4	10.15	6.35	2°
MZPA9017	25.4	10.11	6.35	8°

※注:可按客户要求生产

※ Note:Can be customized according to customer's requirements

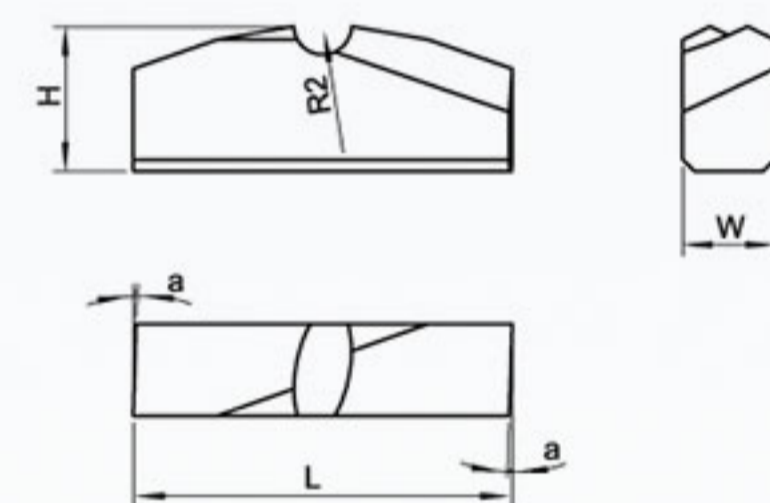
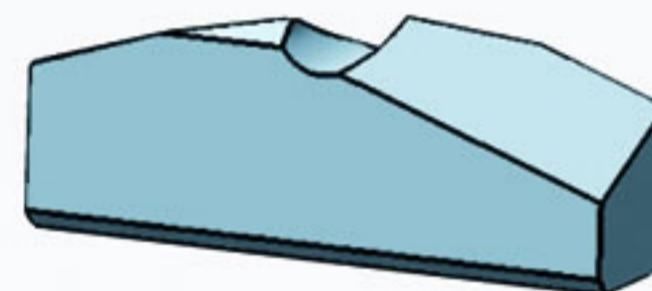


锚杆钻片 Roof Bit Inserts

规格 Type	型号 Dimension(mm)			
	L	H	T	a
MZPB9019	25.4	10.11	6.35	8°
MZPB9045	25.4	10.15	6.35	2°
MZPB12002	25.4	10.36	6.35	8°
MZPB5014	25.97	10.16	6.35	8°
MZPB11009	25.97	10.36	6.35	2°
MZPB12003	26	10.16	6.35	8°
MZPB9016	26.2	10	6.35	2°
MZPB5008	27	13	6	6°
MZPB12007	30	13	5.9	6°
MZPB12008	32	13	5.9	6°

※注:可按客户要求生产

※ Note:Can be customized according to customer's requirements



工程钻具用硬质合金齿

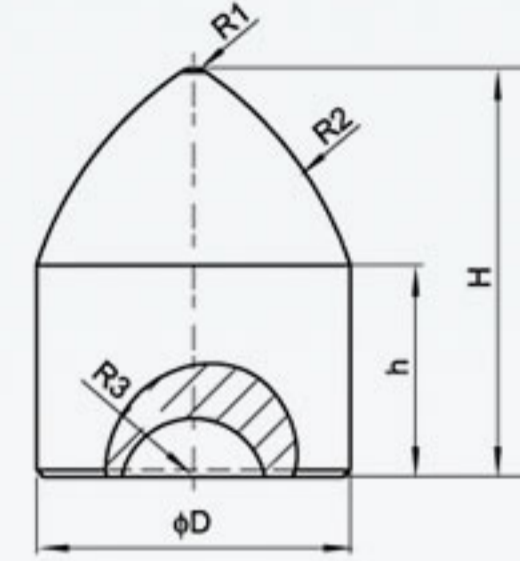
Carbide Inserts for Foundation Drilling Tools and Mining Tools

镐型齿 Conical Inserts

规格 Type	型号 Dimension(mm)				
	D	H	R ₁	R ₂	R ₃
GCA9057	11.8	18	1.5	26	2.5
GCA800804	16	25	1.5	26	4.0
GCA800803	17	24	1.5	26	4.0
GCA9052	18	25	1.5	26	3.0
GCA1208802	18	24	2.0	26	4.2
GCA12079	18.5	24	2.0	26	4.2
GCA8002	19	26	1.5	26	5.0
GCA10073	20	32	1.5	26	4.0
GCA8001	21	28	1.5	26	5.0
GCA800801	21.5	28	1.5	26	5.0
GCA8071	24.6	32	2.5	50	6.0

※注:可按客户要求生产

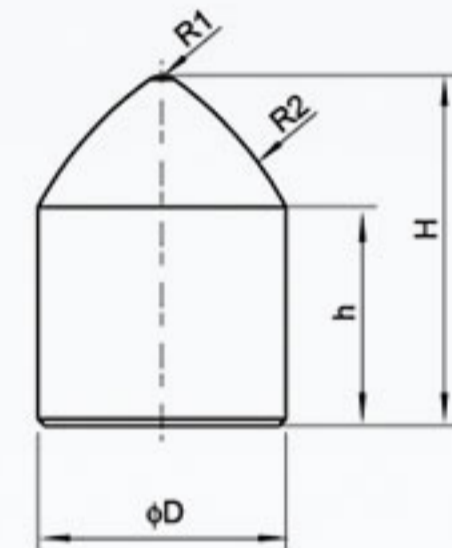
※ Note:Can be customized according to customer's requirements



规格 Type	型号 Dimension(mm)			
	D	H	R ₁	R ₂
GCB10063	19	30	1.5	26
GCB9024	22.3	27	2.0	34
GCB8071	24.6	33	2.5	50
GCB7083	32.7	40	4.0	45
GCB7084	37.7	50	5.5	50

※注:可按客户要求生产

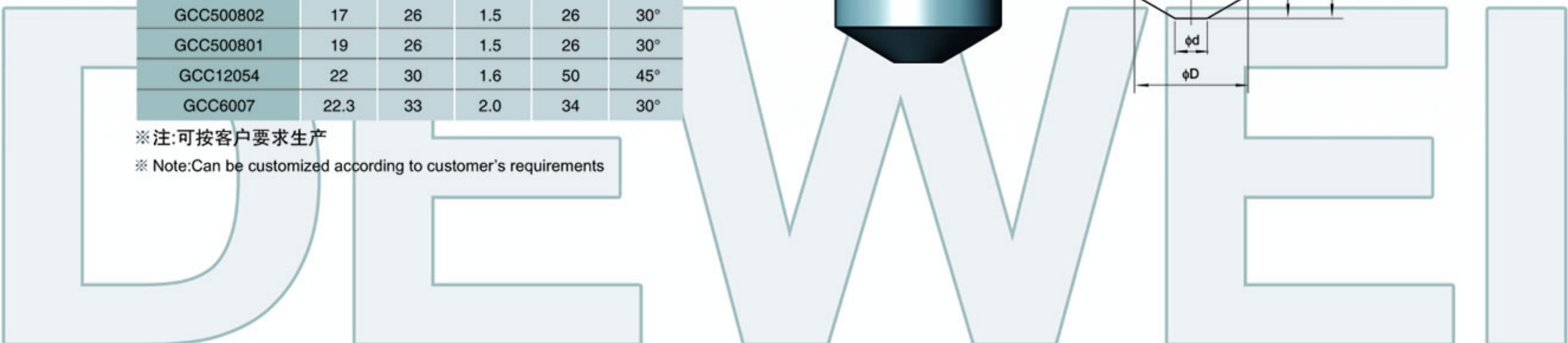
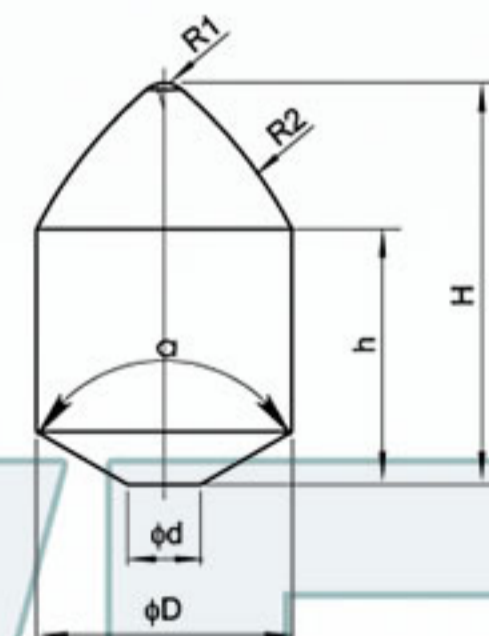
※ Note:Can be customized according to customer's requirements



规格 Type	型号 Dimension(mm)				
	D	H	R ₁	R ₂	a
GCC9026	10	17.1	2.0	15	30°
GCC800703	12	22	1.5	26	30°
GCC800704	12	20.5	1.5	26	15°
GC9027	12	21	2.0	18	30°
GC8010	14	28	1.5	26	30°
GCC500804	14	22	1.5	26	30°
GCC9005	16	25	2.0	26	30°
GCC500803	16	22	1.5	26	30°
GCC500802	17	26	1.5	26	30°
GCC500801	19	26	1.5	26	30°
GCC12054	22	30	1.6	50	45°
GCC6007	22.3	33	2.0	34	30°

※注:可按客户要求生产

※ Note:Can be customized according to customer's requirements



3 DEWEI CARBIDE

工程钻具用硬质合金齿

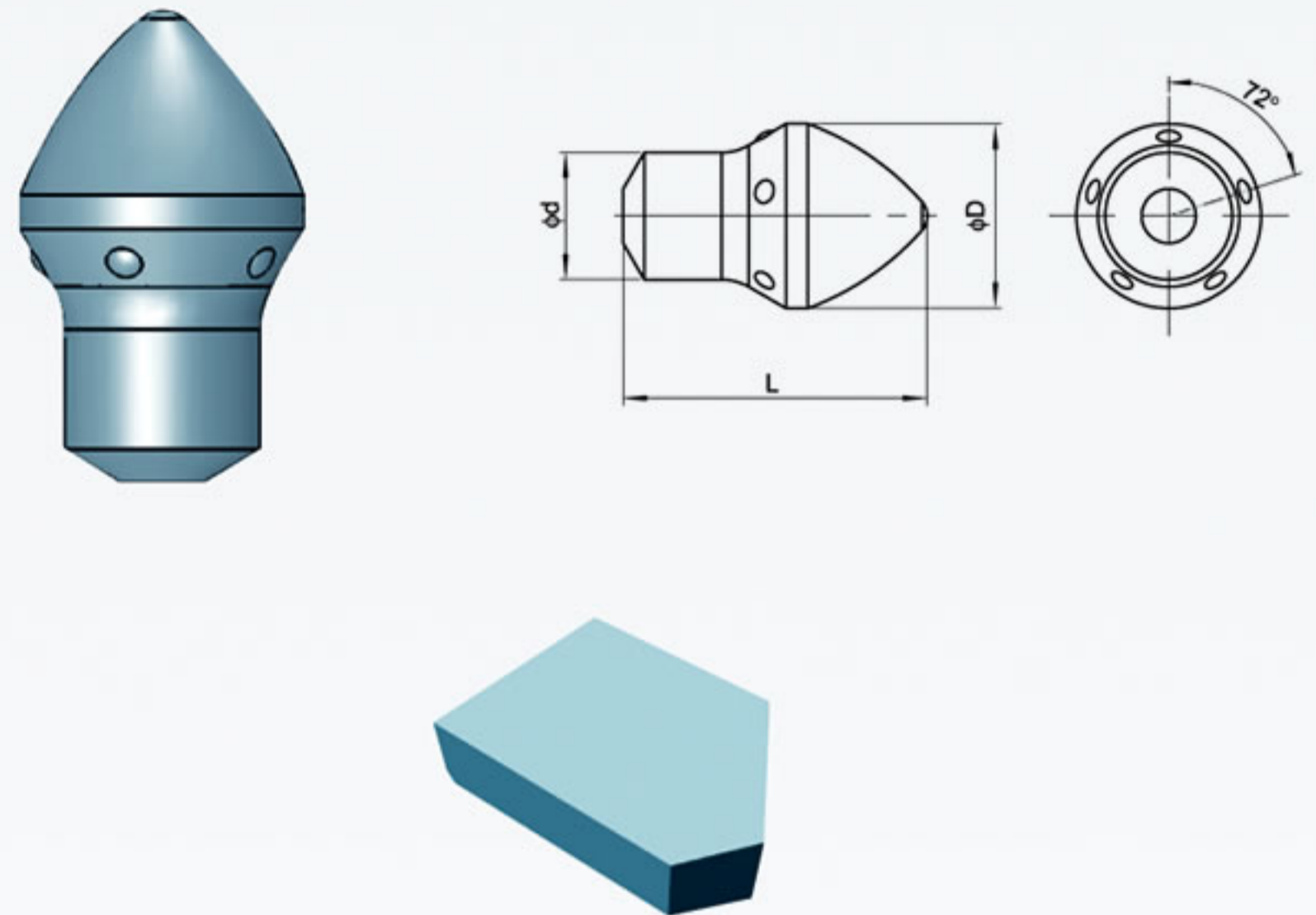
Carbide Inserts for Foundation Drilling Tools and Mining Tools

蘑菇齿 Narrow Bottom Inserts

规格 Type	型号 Dimension(mm)	
	D	L
MGCK6045	16	19.5
MGCK504102	17	28
MGCK5067	17	24
MGCK9086	18	21.5
MGCK504101	19	28
MGCK504103	22	30
MGCK908701	22	24
MGCK10014	22	26
MGCK7012	22	34
MGCK12081	25	30
MGCK504104	25	38
MGCK9023	25	38
MGCK908702	25	29.5

※注:可按客户要求生产

※ Note:Can be customized according to customer's requirements

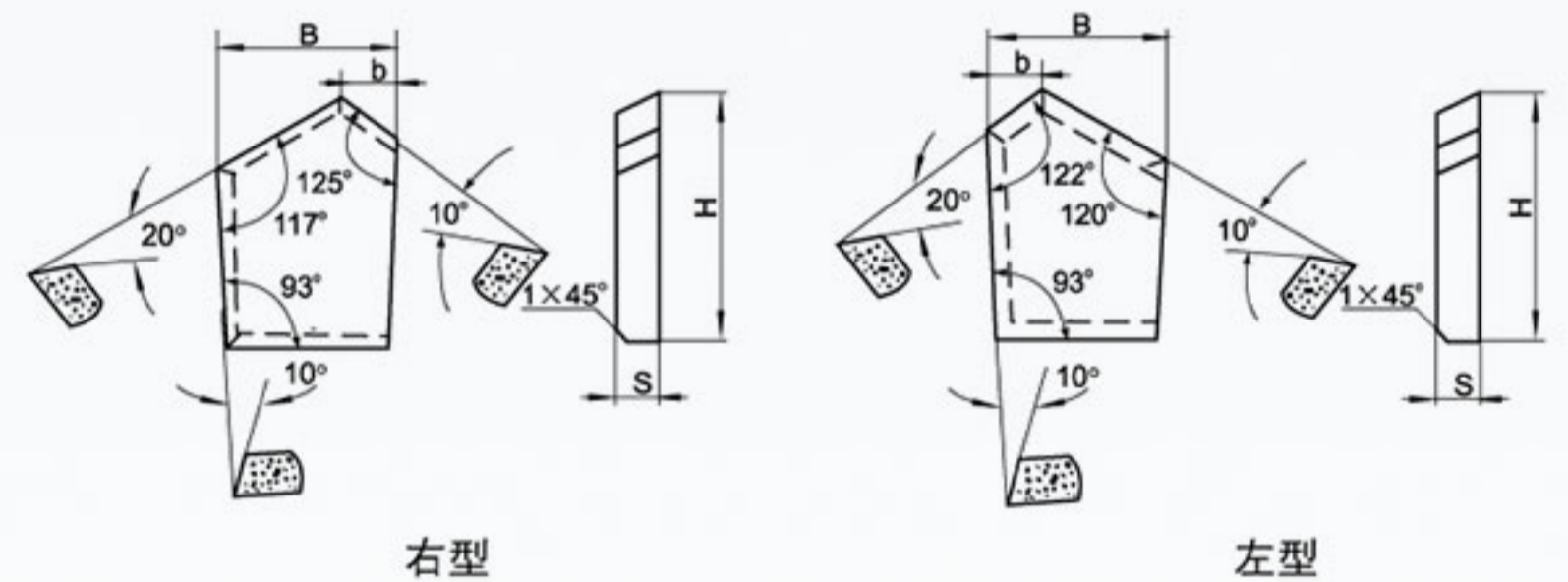


煤钻片 Coal Mining Tips

规格 Type	型号 Dimension(mm)			
	B	H	S	b
DM1011R/L	11.0	12.0	2.5	4.0
DM1014R/L	14.0	19.0	3.8	4.0
DM1015R/L	15.0	22.0	3.0	5.0
DM1018R/L	18.0	22.0	6.0	5.0

※注:可按客户要求生产

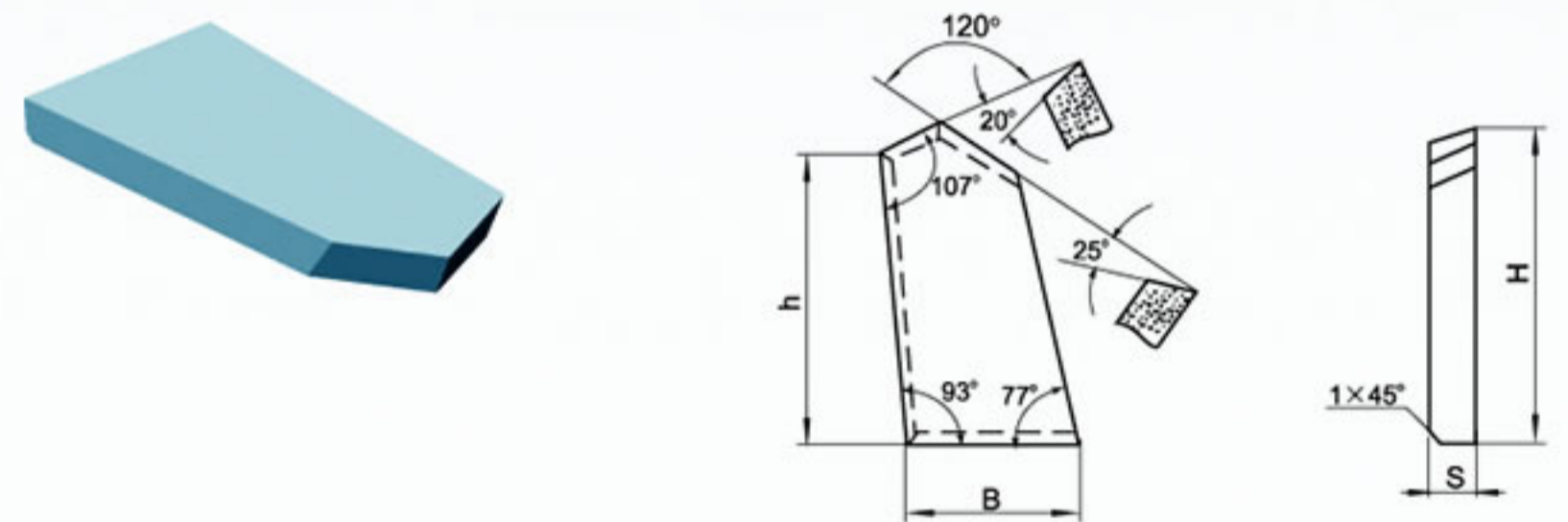
※ Note:Can be customized according to customer's requirements



规格 Type	型号 Dimension(mm)			
	B	H	h	s
DM1112	12.0	18.0	15.8	3.0
DM1113	13.4	26.0	23.8	3.0

※注:可按客户要求生产

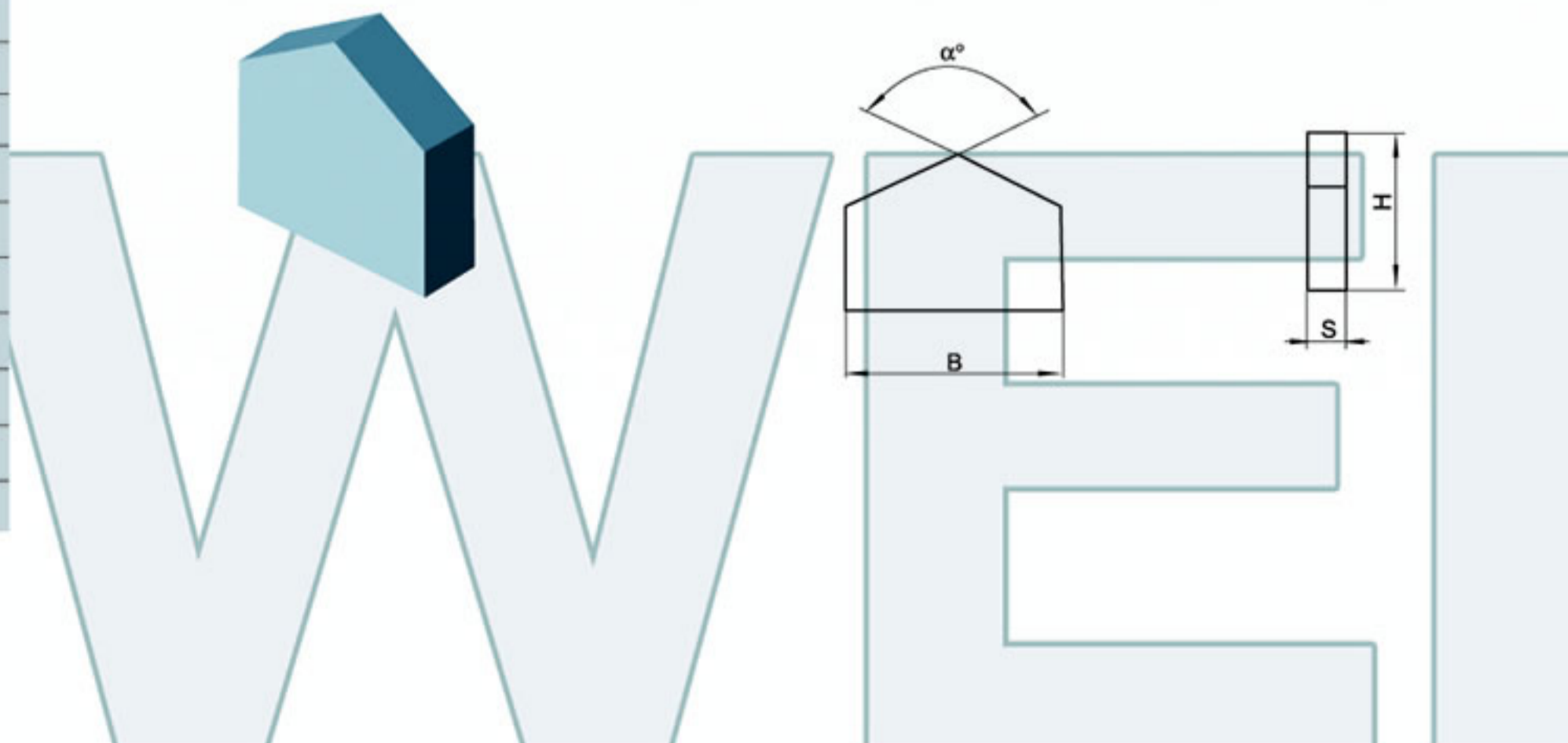
※ Note:Can be customized according to customer's requirements



规格 Type	型号 Dimension(mm)			
	B	H	S	a
DM1306	6.0	5.0	1.4	130
DM1311	11.0	9.0	2.0	130
DM1313	13.0	10.0	2.5	130
DM1315	15.0	10.0	2.5	130
DM1317	17.0	13.0	3.0	130
DM1319	19.0	13.0	3.0	130
DM1322	22.0	15.0	3.5	130
DM1326	26.0	18.0	4.5	130
DM1333	33.0	22.0	3.0	130
DM1345	45.0	27.0	9.0	130

※注:可按客户要求生产

※ Note:Can be customized according to customer's requirements



4 DEWEI CARBIDE

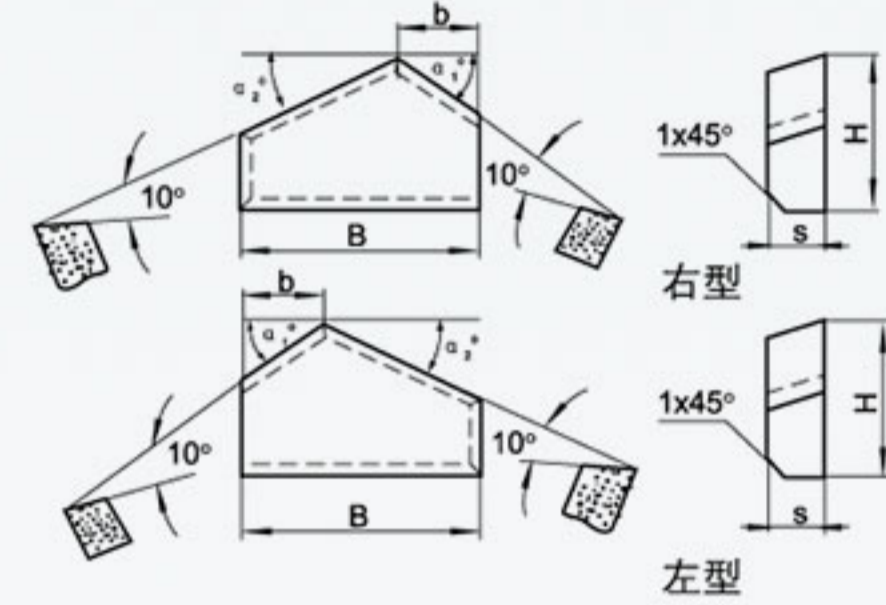
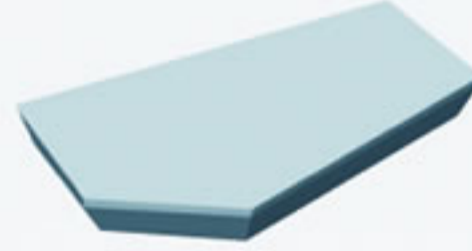
工程钻具用硬质合金齿

Carbide Inserts for Foundation Drilling Tools and Mining Tools

规格 Type		型号 Dimension(mm)							
Right	Left	B	H	s	b	a ₁	a ₂		
DM1427R	DM1427L	27.5	22.0	4.5	10.0	30	35	35	30
DM1445R	DM1445L	45.0	21.0	9.0	15.0	31	17	17	31

※注:可按客户要求生产

※ Note:Can be customized according to customer's requirements

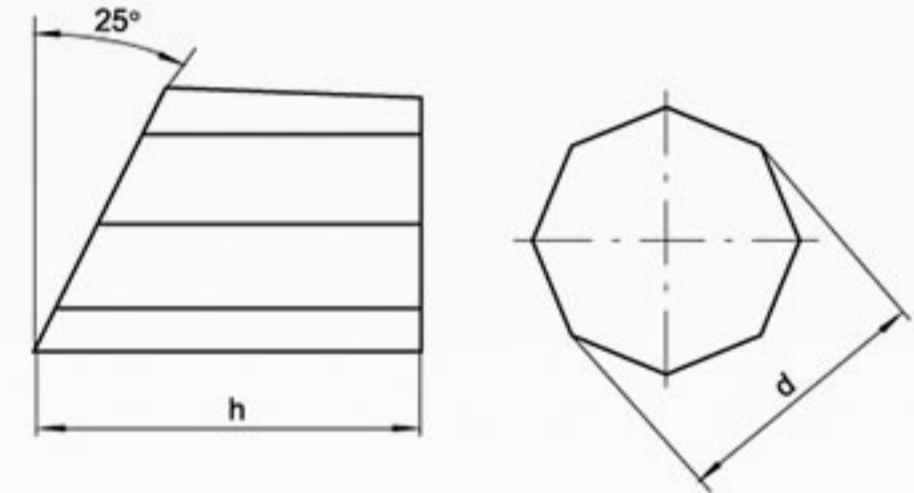


八角形 Octagonal Tips

规格 Type	型号 Dimension(mm)	
	b	h
T3005	5.0	10.0
T3007	7.0	10.0
T3007A	7.0	15.0
T3007B	7.0	20.0
T3010	10.0	15.0
T3010A	10.0	20.0

※注:可按客户要求生产

※ Note:Can be customized according to customer's requirements



DEWEI

5 DEWEI CARBIDE

工程钻具用硬质合金齿

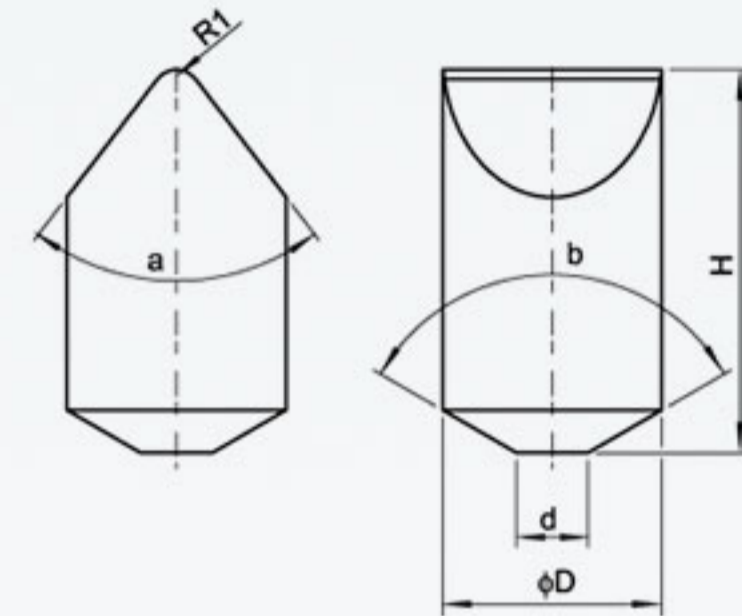
Carbide Inserts for Foundation Drilling Tools and Mining Tools

刀齿 Flat Bit Inserts

规格 Type	型号 Dimension(mm)			
	D	H	a	b
DC703802	7.1	11.2	0.5x45	82
DC10028	9.1	16.7	118	80
DC8056	9.169	16	120	75
DC9047	9.17	5.95	-	80
DC1001501	9.17	16.45	90	80
DC1001603	9.17	20.25	120	78
DC7016	9.2	17	-	75
DC703801	9.25	12.7	0.5x45	82

※注:可按客户要求生产

※ Note:Can be customized according to customer's requirements

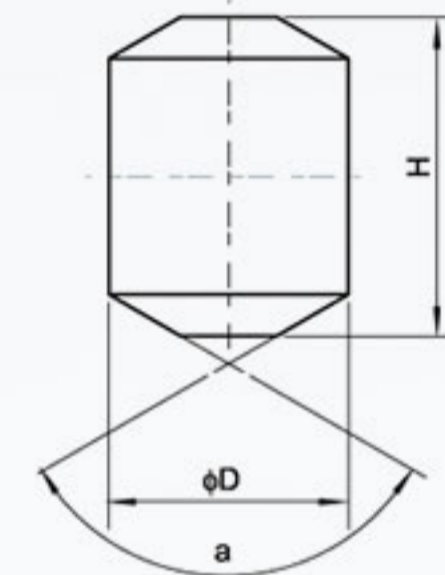


平头齿 Flat Top Inserts

规格 Type	型号 Dimension(mm)			
	D	H	a	b
PTCA13002	5.2	7	120°	120°
PTCA10072	8.25	9.53	0.7X45°	0.7X45°
PTCA7075	15	20	120°	120°
PTCA12053	16	20	120°	120°
PTCA6024	17	25	120°	120°

※注:可按客户要求生产

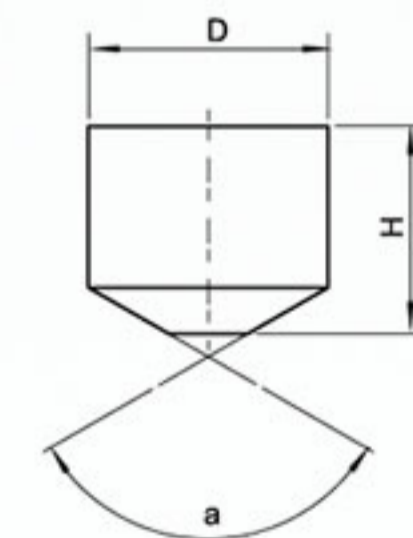
※ Note:Can be customized according to customer's requirements



规格 Type	型号 Dimension(mm)		
	D	H	a
PTCB9046	6.95	8.33	120
PTCB8053	9	10	120
PTCB10029	9	12	80
PTCB800701	9.2	10	120
PTCB10001403	9.2	11.9	120
PTCB1001701	9.6	12.3	80
PTCB10055	9.825	14.88	90
PTCB800702	11	10	120
PTCB9017	11	11	1x45
PTCB8003	11	12	120
PTCB9016	14.8	15	1x45
PTCB7076	15	13	120
PTCB1001402	15	15	120
PTCB12108	16	15	120
PTCB1001702	16.25	15.1	90

※注:可按客户要求生产

※ Note:Can be customized according to customer's requirements



DEWEI



浙江德威硬质合金制造有限公司

ZHEJIANG DEWEI CEMENTED CARBIDE MANUFACTURING CO.,LTD

地址:中国·浙江·乐清市芙蓉工业区

Add:Furong Industrial Park,Yueqing,Zhejiang,China

电话 (Tel):0086-577-62298508 62298502 62298577

传真 (Fax):0086-577-62298505

邮编 (P.C):325612

Http://www.cn-dewei.com